



Wahnapitae First Nation Community Newsletter

Mkwa Giizis
'Bear Moon'
February 2013

Inside this issue:

Chief and Council	2
Public Safety Message	3
Go Ice Fishing	4
Public Health: Lice	6
Family Events Calendar	8
Opportunities	16
Community Classifieds	22

Chief & Council Corner

Hello Everyone

As we begin the year, there are many challenges ahead for Chief and Council as we begin to reshape our Band Administration. We are pleased to begin the hiring of new staff to meet the needs of membership and our community. New staff will also help us meet our obligations with governments and industry. In January we began the process for developing new policies on business development and student summer employment. As Council we recognize that there are many potential new business opportunities out there, but the challenge is, which ones will benefit our members and be of low risk to the Band. As spring quickly approaches, students will be looking for summer work, so this is important that we have a system to respond to our youth.

As our staff pool grows, so will our ability to meet the needs of the community, but the challenge is building our growing talented team. We can all do it together.

Hans Matthews

Councillor

Next Chief and Council meeting is scheduled for March 5th 2013 at 5:00 PM

Reminder to members: submissions to Chief and Council are to be made no later than March 1st @ 4PM, this is a standard 4 day review period as per our Governance Policy, failure to submit on time may result in your request being held over till the following meeting. Miigwetch for your cooperation.



Congregate Dinning



Thursday February 14th, 2013
3pm to 5pm
At the Gathering Place

Come join us for some great food, great company and fun times for all!



AN IMPORTANT MESSAGE FROM OUR FRIENDS AT NICKEL BELT SNOW SPIRITS (NBSS) SNOWMOBILE CLUB



This is what happens when the ice is NOT thick enough - Ice Hut - Lake Wahnapitae- Jan. 26, 2013

Lake Wahnapitae has frozen over but IT IS NOT SAFE PLEASE STAY OFF THE LAKE !!

Here is the report from checking the lake on January 24, 2013.

100 ft out ...18 inches 200 ft out... 7 to 8 inches 300 ft out... 3 inches and slush.

We will not be staking this weekend .

If the slush comes up and freezes that may help us for next week .

Again PLEASE STAY OFF Lake Wahnapitae !!

Ride Safe

Please check the trail status before riding @ the Ontario Federation of Snowmobilers Clubs website; <http://www.ofsc.on.ca/trail-status.html>



Know Before You Go On Ice!
Never assume ice is safe! Make Smart Choices ...

Need something **Fun** to do this winter?

Why not take the family ice fishing?? It's a great way to spend time together :)



Some things you should know:

Two lines may be used for ice fishing except in a limited number of waters (see the Exceptions for the Zone in which you are fishing by referring to the [Ontario Fishing Regulations Summary](#)).

At all times you must be within 60 m (197 ft.) of any line or tip-up you are using when ice fishing and you must have a clear and unobstructed view of the lines being used at all times.


Any spring-loaded device which sets the hook for an angler may not be possessed within 30 m (98 ft.) of any waters.

Ice Hut Registration

Lake Wahnapitae is in Zone 10, which requires Ice hut Registration, and the Ice hut removal date is March 15th, 2013.

Ice hut registration numbers must be at least 6.3 cm (2.5 in.) in height and clearly

Ministry of Natural Resources
TIPS Line toll free
1-877-TIPS-MNR (847-7667)
Sudbury Rainbow
Crime Stoppers
705-675-TIPS (8477)



ICE FISHING

Keep It Clean

Have fun this winter, but please remember to ...




- Respect families and shoreline residents
- Keep noise levels down
- Use public access points
- Practice proper catch-and-release method
- Take only the fish you need for yourself
- Use public portable toilets or bring a pail or chemical toilet
- Be familiar with the Ontario Fishing Regulations
- Bring garbage bags

You could be subject to fines if you:

- Leave garbage, including fish waste, on public lands or in waters
- Release live bait or the contents of a live bait bucket, including water, into any waters or within 30 metres of any waters
- Leave your ice hut on the lake after March 31 in Greater Sudbury or after ice breakup

Ice Huts:

- Mount your ice hut on blocks or runners to keep it off the ice for ease of removal
- Ice huts must be registered with the local Ministry of Natural Resources Office
- Clearly display your registration number on the outside of your hut



COMING SOON

Youth Movie Day

WFN Children / Youth!!!!

Movie Day to be held at the Gazebo
On Friday, February 1, 2013 there will
be two sessions to prevent overcrowd-
ing.

10:30-12:30 PM

1:30—3:30 PM

Come out and spend the afternoon
for a movie on the big screen
and have some popcorn with your
friends. Please call Debbie to confirm
which you would like to attend, to

THIS FRIDAY
FRIDAY, FEBRUARY 1ST,
2012
PA Day fun





The Facts of Lice

Every parent needs to know the facts of lice. Why? Millions of North Americans will get head lice this year.

© Will you know what to do?

WHAT ARE HEAD LICE?

Head lice are small grey or reddish brown bugs (1mm to 4mm Long) depending on their age. Baby lice are called Nymphs. Lice live on the human head. They do not live on pets or on other parts of the body. They feed on blood and cannot survive off the head for more than 24 to 48 hours without a blood meal. They also do not hop, jump or fly. Thank God! Lice lay eggs. These are tear-drop shaped and are glued to the hair shaft on an angle. They are also only glued to one side of the hair shaft. The viable eggs are typically brownish/yellow to caramel in color. Empty egg cases or dead eggs are called nits. These are clear, opaque, almost see through. Do not rely on a product that claims to kill lice and their nits as it is the eggs that need to be killed or removed. Viable lice eggs are never white in colour. Female lice lay 3 to 5 eggs per day and live for 30 days. They need a male to mate with. Lice eggs take 7 to 10 days to hatch and another 7 to 10 days to be mature enough to mate.

WHAT DO I LOOK FOR

Look for lice and lice eggs in the hot spots. These are around the ears, at the crown of the head and at the nape of the neck. It is best to use bright lights and proper magnification when looking. Sunlight is best. Look for red scabs caused by scratching, lice eggs and lice crawling through the hair or sucking blood from the scalp. Lice lay their eggs close to the scalp but look along the whole hair shaft. Do not confuse DEC plugs, hair casts or other hair debris with lice eggs. Remember if it is white like paper or snow. It is not a lice egg.

HERE IS AN EXAMPLE

As you can see, the lice egg is clearly attached to one side of the hair shaft. The DEC plug and hair cast surrounds the hair shaft. This dandruff like skin debris also sticks to the hair shaft like a nit but the difference is they are white and they slide easier. You need not concern yourself if you find these during a head check. Before you treat for lice or if you are uncertain, call for our free nit diagnosis. If you do discover live lice and eggs, don't panic. Before you run to the drug store call our hotline or visit our website. We can direct towards safer and effective treatment options. We are also available to assist you with in home head lice removal. Help is available.

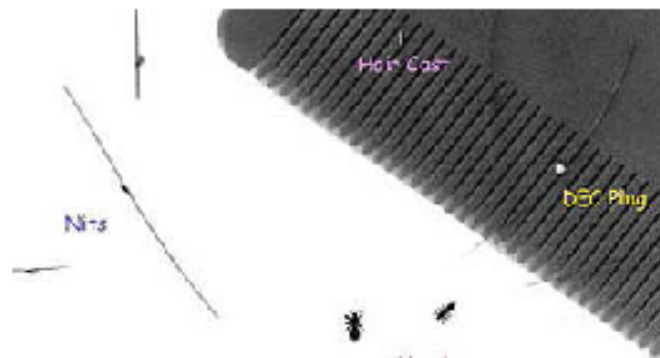


Photo courtesy of headlice.org

A TYPICAL LICE EXPERIENCE

Most head lice sufferers have tried every product on the market, spent countless hours cleaning and have wasted both time and money on treatments and nit picking. They have torn out their hair with lousy nit combs and fried their hair with the use of chemical treatments. They have bagged up toys for weeks, missed work and social functions and have felt great stress and frustration. Especially if weeks and months go by without relief. You are not alone in your struggle. Scientific studies have shown that lice are building a resistance to most pesticide head lice products. Over use and abuse of these can also be potentially dangerous to young children and those administering treatment to them. It is our opinion that to be successful at eliminating lice one must take a systematic approach. This meaning that you must combine an effective topical treatment with thorough manual removal over the course of a two week period. If you're at your NITS END with head lice call our info line or visit our web site to learn more about how you can eliminate head lice safely and quickly without the frustration and the use of potentially harmful pesticides.

LIFE CYCLE OF THE HEAD LOUSE



Adult female glues a nit to the hair with a cement bond.



Nymph resembling miniature adult lice hatches in 7 to 10 days.



Nymph molts or sheds skin 3 times to reach adult stage in 7-10 days.



Lice live for approx. 30 days and a female louse can lay between 3-5 nits per day.

LICE FACTS

- Female head lice lay lice eggs.
- One female louse lays approx. 3 to 5 eggs per day on the hair shaft.
- To succeed at eliminating a head lice infestation, one must remove all lice eggs and lice from the hair.
- The lice eggs are tear-shaped, usually brown in colour, and are attached to only one side of the hair shaft. Lice egg look-alikes, are white, they surround the hair shaft and are often misdiagnosed as lice eggs. Nits are empty or dead lice eggs. They are see-through and will stick to the hair shaft on one side.
- Most mothers waste both time and energy doing countless washing of bed sheets and clothes. Lice are not living in your environment. They are living on your head. See our 4 easy steps to cleaning your environment below.
- Pesticide sprays & treatments should be used with caution or in our opinion, not at all.
- Don't rely on products that claim to kill nits. Lice eggs must be removed by hand.
- We provide a **Free Nit Diagnosis Service**. Call us for details.

4 EASY STEPS TO CLEANING & ENVIRONMENTAL CARE

Head lice are not living in your home, on your furniture or in your bedding. They prefer to be on your head. The good news that is a louse will die within 24 to 48 hours without a blood meal from you.

HERE IS HOW TO CLEAN YOUR HOME OR ENVIRONMENT

- #1 Place all items that can safely be dried on high heat in a dryer for 20 to 30 minutes.
- #2 Vacuum items that cannot be dried
- #3 If an item can not be dried or vacuumed, set it aside for 24 to 48 hours.
- #4 For regular use and shared items or for travel purposes...try our Nit Pickers Secret Spray Away enzyme cleaner. Ideal for helmets, head rests, couches, car seats, and bedding.

That is it! Remember, the focus of head lice elimination should be on the manual removal of all lice eggs and nits from the head. Remember lice are not living in the environment, they are living on you. Cleaning should be done initially after your first big nitpick and treatment. It can be repeated every 4th to 5th day after

ATTENTION WFN RESIDENTS: YOU MAY BE ELIGIBLE FOR A SUBSIDY

Unfortunately lice has become an issue in all of the schools. If you had to purchase treatment for lice in the last two months you may be eligible for a subsidy. Please submit receipts for lice treatments, at the WFN Band Office Attention: Debbie Plain-McGregor—Child and Youth Worker .

We have some flyers/information and natural products available / combs available in the Health Department from the Lice Squad should you require treatments in the future. Just give Debbie at call at 705-858-0610

Upcoming Child Youth & Family Events

Thurs. Jan 31

Teen Gaming

1-4 pm—Centre for Excellence



Fri. February 1

PA Day—Movie Day

12 to 3:30 p.m. Centre for Excellence

Tues. Feb 5

Moms / Tots Drop in Tea—crafts

10 am to 12 noon in Gazebo

Wed. Feb 6 & 20

Zumba Outing

6:30—8:30 class in Capreol at 7 p.m.

Thurs. Feb 7

Youth Baking / Valentine Cupcakes

4-6 Gazebo

Wed. Feb 13 & 27

Homework Club

4-6 in the Gazebo

Mon. Feb 11

Nutrition Bingo

5 pm canteen—proceeds to WFN Youth

5:30-8:00 bingo - All welcome

Mon. Feb 18

Family Fun / Sliding Party

1-4 pm at the Big Hill

Tues. Feb 19

Food Bank / Capreol

9:30—11:30 * call to get picked up

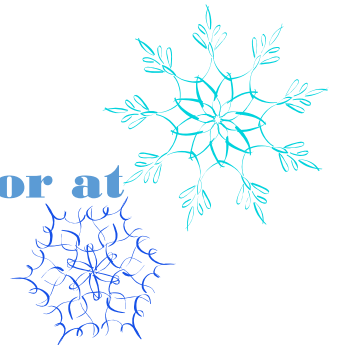
Fri. Feb 22

Family / Youth Movie Night

6:30—8:45 p.m. Maan Doosh Gamig



**For more info call Debbie Plain-McGregor at
Band Office 705-8580-0610 ext. 221**





Bounce Back & Thrive: Resiliency Training

Congratulations to all participants who completed the Bounce Back & Thrive 10 week resiliency skills training program for parents. We travelled each week to training at the Shkagamik Kwe Health Centre in Sudbury.

Chi-Miigwech to Carol Ann Cheechoo, Healthy Choice Coordinator of Shkagamik Kwe Health Centre who delivered the program. Carol Ann kept it interesting, relevant and fun for all participants. All participants look forward to future opportunities.



Bounce Back & Thrive participants: (back l to r): Shannon Skelliter; Cynthia Osawamick; Debbie Plain-McGregor; Wendy Tyson; Angie Kratky; Samantha Corbiere; Carol Ann Cheechoo – Healthy Choices Coordinator (front): Christine Ominika



NUTRITION BINGO



Monday, February 11, 2013

at the
WFN Centre for Excellence
in the
Maan Doosh Gamig hall

BINGO starts at 5:30 pm

CANTEEN OPENS AT 5 pm

Bingo is pay as you play

Come & eat or come & play! All Welcome

Family/Youth Movie Night **BREAKING DAWN Pt. 2**



At WFN Maan Doosh Gamig
Centre for Excellence

Friday, February 22, 2013
At 6:30 p.m.

Concession stand available
for Youth fundraising

Call Debbie for more info.
705-858-0610 ext. 221



**MEMORIAL SOCIAL for
LILLYBA (OSAWAMICK) BOURGEOIS
MARCH 2, 2013
Wasse Abin High School, Wikwemikong, ON**

Eagle Staff Carrier:
GEMAA DUKE PELTIER

Master of Ceremony:
CHRIS PHEASANT

Head Elder:
SHIRLEY WILLIAMS

Arena Director:
NIMKII OSAWAMICK



Host Drum:
HIGH EAGLE

Invited Drums:
THUNDER EARTH

**WIKWEMIKONG DRUM
COMMITTEE**

Head Dancers:
**LIZ OSAWAMICK
& LEE BENSON**

**Potluck Feast & Story Sharing 2pm
Grand Entry 5pm
Giveaway 8pm (ish)
Departure 9pm**

Lillyba was 3rd Degree Midewiwin kwe of the Bear Clan and Chief Jingle Dress Dancer of the Three Fires Midewiwin lodge. She devoted her time & energy by teaching the language, culture and health & wellness. She has touched many people of different communities with her internal beauty! All welcome to come and celebrate the life of a beautiful Anishinabekwe!!

**SPECIALS: Jingle Dress 1st: \$300 2nd: \$200 3rd: \$100 4th&5th: Gifts
Bear Calling, Potatoe Dance, Hand Drum, Spot Dances**

Gifts for show-up drums....Donations & Volunteers greatly appreciated!!

Contact: Crystal Osawamick 705.923.4227 or
Bourgeois Family 705.295.4615



: Memorial Social for Lillyba (Osawamick) Bourgeois

Pow Wow Regalia Making Workshop

SATURDAY, FEBRUARY 16, 2013
10:00AM – 7:00PM
Maandosh Gamig (Gathering Place)

Aambe....let's start sewing, beading...creating in the making of regalia, ribbon shirt/skirt...etc. that we all can be proud of when we wear in celebration of life!

This event is opened to all. There is no cost. Participants can bring their own material and supplies or there will be some material, beads...etc. available for purchase on-site.

FUNDRAISING INITIATIVES

Luncheon/Supper, Snacks

....proceeds towards WFNs 18th Pow Wow

50/50, Raffle & Penny Table...proceeds towards

Lillyba (Osawamick) Bourgeois Memorial Social



CONTACT INFO.

HOST: Crystal Osawamick 705.923.4227
MAIN FACILITATOR: Hiawatha Osawamick
hosawamick@nativebebe.com



Family Sliding Party

On Family Day — Monday, February 18, 2013

Bring out the Family for
some **FUN FUN FUN**



- ◆ Sliding
- ◆ Hot Dogs
- ◆ Hot Chocolate
- ◆ Sculpture Contest
- ◆ Marshmallow Roast





OPPORTUNITY

Request for Proposals from Local Artists Manitoulin Hotel and Conference Centre Art from the Manitoulin and North Shore – REQUEST FOR PRO- POSALS



The Manitoulin Island Hotel and Conference Centre is a new 58 room Hotel and Conference Centre scheduled for completion at March 31st, 2013.

The Manitoulin Hotel and Conference Centre primary focus is in the area of aboriginal tourism. Manitoulin Island and surrounding artists are renown throughout the world, and the new Hotel provides a pivotal location to celebrate and showcase the art from our area.

The Great Spirit Circle Trail is quickly becoming internationally recognized as the aboriginal tourism partnership that aligns world interests in aboriginal tourism with the member First Nation communities, culture, and arts. The location of this Hotel is of particular significance to the investing partners and to the GSCT, as it located centrally to all participating communities and is at the gateway to Manitoulin Island.

The Manitoulin Hotel and Conference Centre would like to create opportunities for artists from the partners and members of the GSCT to integrate art from our region within the Hotel facilities.

The Board of Directors is inviting First Nation artists to submit photographs of their work for printing to integrate the art in the Hotel. Facility. In addition to these opportunities, spaces will be made available on a commission basis for original pieces, in the lobby, conference room, registration area, hallway and throughout the hotel. For further information, please email gm@sagamokdc.ca.

Proposals and photographs of the work must be submitted no later than February 28th, 2013 at 4:00 pm.

OPPORTUNITY

MANITOULIN HOTEL AND CONFERENCE CENTRE REQUEST FOR PROPOSALS RESTAURANT TENANT

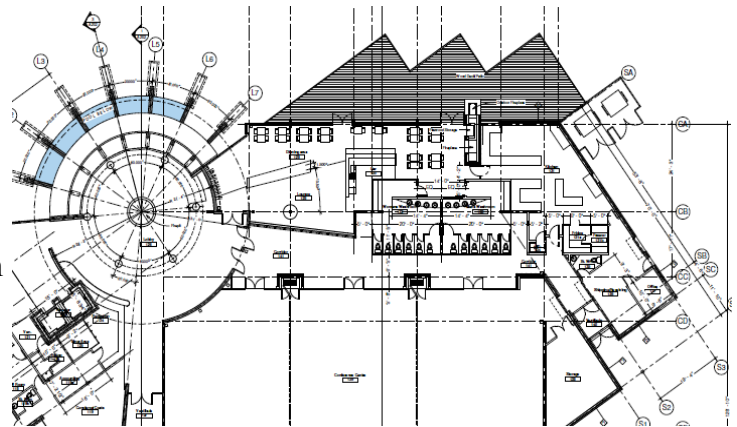


The Manitoulin Hotel and Conference Centre Board of Directors is seeking interested Parties to Lease and Operate a Restaurant with Catering Functions at the Manitoulin Hotel and Conference Centre in Little Current, Ontario.

The square footage of the restaurant is approximately 1,600 square feet and a kitchen area encompassing of 900 square feet. There is a deck/patio area at about 1,400 square feet.

The facility consists of 58 guest rooms in a four story building looking over the North Channel.

To receive a copy of the Manitoulin Hotel RESTAURANT PROPOSAL Contract Requirements please contact the Marilyn Nicholls, EDO, at the WFN band of office.



Responses and inquiries to this RFP can be forwarded to: **THE BOARD OF DIRECTORS, Manitoulin Hotel and Conference Centre c/o Sagamok Development Corporation, R. Nikki Manitowabi, General Manager [gm@sagamokdc.ca] Tel: 705.865-1134.**

RFP submission deadline: February 14, 2013, 4:30 p.m. There will be no public opening of proposals. All proposals will be confidential until the lease has been awarded.



INVITATION FROM CORRECTIONAL SERVICES CANADA

Ahnii,

In keeping with the ongoing commitment of the Correctional Service of Canada (CSC) to engage partners in Aboriginal Communities, I have the pleasure of inviting you to three (3) upcoming Aboriginal Recruitment and Awareness Forums.

Where: City of Sudbury

W-132 Room
Laurentian University

When: February 21, 2013

Time: 0900-1600 Hours

Who: All Aboriginal Community Members/Stakeholders in the Sudbury Area

Notes: Lunch and refreshments will be provided. Parking will be provided.

Please RSVP to myself (the sender) at your earliest convenience.

Each Aboriginal Outreach Community Engagement Forum has the purpose of enhancing the capacity and awareness of Aboriginal communities pertaining to CSC's commitment to Aboriginal community engagement and Aboriginal recruitment. This will include presentations on CSC's Aboriginal Recruitment Initiatives, as well as the opportunity for questions and discussions surrounding the topic.

In addition, each Aboriginal Outreach Community Engagement Forum will provide an opportunity for community members to discover information on CSC's mandate pertaining to Aboriginal Corrections and commitment to Aboriginal Offenders. This will include presentations on current CSC's Aboriginal Initiatives, as well as the opportunity for questions and discussions surrounding the topic.

Each forum invitee will receive an information package inclusive of a knowledge survey on CSC's Mandate as it pertains to Aboriginal Corrections and Aboriginal Recruitment Initiatives, to be returned via email - prior to the forum.

We look forward to meeting and speaking with you.

Chi Miigwetch,

Robert

Robert M. Rittwage

Aboriginal Project Officer (NHQ) | Agent de Projet Autochtone (AC)
Correctional Service of Canada | Service Correctionnel du Canada
robert.rittwage@csc-scc.gc.ca
Telephone | Téléphone [613-536-4745](tel:613-536-4745)



Aboriginal Women Business Day

February 22nd, 2013

Where:

Holiday Inn 1696 Regent Street,
Greater Sudbury

Agenda:

8:30 am – Registration
 9:00 am – Welcome & Opening Remarks
 9:15 am – Workshops
 12:00 pm – Lunch/Keynote Speaker
 1:00 pm – Funding Panel
 4:30 pm – Closing Remarks

Workshop Topics:

- Understanding business financials
- Bidding & Procurement Process with the Government
- Using Social Media to Promote your Business

Keynote Speaker:

Joanne Contant, CGA, CAFM

Joanne is a Métis from Northbay, Certified General Accountant, Certified Aboriginal Financial Manager, consultant, community college faculty member and entrepreneur who brings over 25 years of financial and business experience.

Contact:

For more information or to register, contact 705-688-7582 or regionalbusinesscentre@sudbury.ca.

Registration Deadline

February 15th, 2013

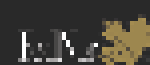
Proudly supported by



Aboriginal Business



Canada



Ontario



XSTRATA SCHOLARSHIP RECIPIENTS for the 2012-2013 ACADEMIC YEAR!!!



Congratulations go out to:

- Dakota Recollet – Environmental Earth Sciences**
- David Low – Bachelor of Applied Science Chemical Engineering**
- Erika Gollan-Bachelor of Science-Nursing Program**
- Jolene Recollet – Business Administration/Human Resources**
- Marnie Anderson – Health Promotions**

We wish you much success in your academic year.
Congratulations again from all of us at Wahnapiitae First Nation and Xstrata.



**Dr. Dan Andreae Distinguished Presidential
Lecture Series on Living in Healthy
Communities presents:**

Dr. Gabor Maté

Living Well in a Toxic World

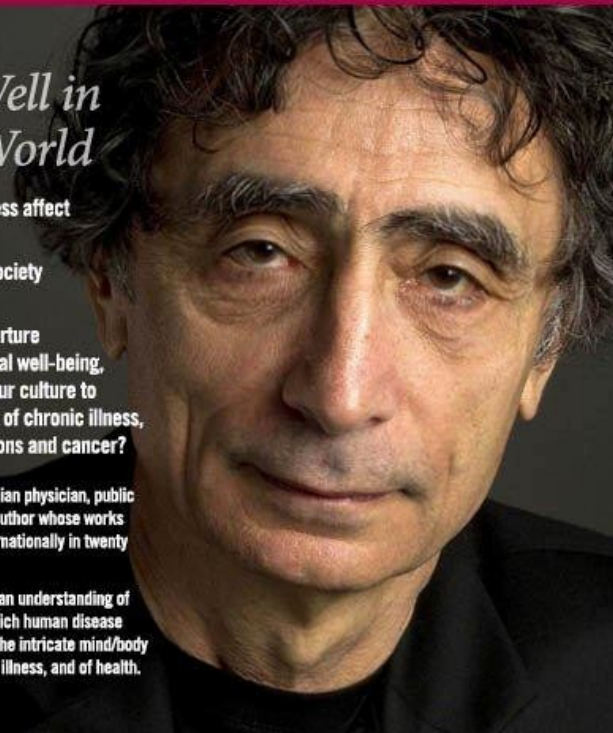
How does mental stress affect the physical being?

Is our materialistic society making us sick?

What can we do to nurture emotional and spiritual well-being, and can we change our culture to reduce the incidence of chronic illness, auto-immune conditions and cancer?

Dr. Gabor Maté is a Canadian physician, public speaker and bestselling author whose works have been published internationally in twenty languages.

At the core of his work is an understanding of the broader context in which human disease and disorders arise, and the intricate mind/body unity that is at the root of illness, and of health.



**Thursday, Feb. 7th at 7 p.m.
Fraser Auditorium
Laurentian University**

Tickets are required for entry. Free tickets to this lecture are available, on a first-come, first-serve basis at the following locations: Laurentian University Bookstore and J.N. Desmarais Library; Cambrian College Registrar's Office; Collège Boréal Registrar's Office; Old Rock Roastery and the following branches of the Sudbury Public Library: 74 Mackenzie Street, 1346 Lasalle Boulevard, 2120 Regent Street South.

Tickets can also be obtained online at: laurentian.ca/lecture

Dr. Maté will be available for book signing following the lecture. Books will be available for purchase.

**Seating is limited.
Free parking in lot #1.**



DibAAJIMOOWINAN

GEZHTOOJIG EMPLOYMENT & TRAINING

FEBRUARY WORKSHOPS

- Interview Skills.....** Thurs. Feb. 07, 2013
- Programs & Services.....** Thurs. Feb. 14, 2013
(Second Careers & Apprenticeships)
- Resume & Cover Letter.....** Thurs. Feb. 21, 2013
- Job Search.....** Thurs. Feb. 28, 2013



(10:00 a.m. - 12:00 p.m.)

**Monthly Draws... Fifty Dollar-
Wal-Mart Gift Certificate
Refreshments
Snacks**

Stay Current & Updated... Register Today!

Contact: Colleen...705-524-6772
(cwebkamigad@gezhtoojig.ca)

WE ARE LOCATED NEXT TO...

**HardRock42-Gastro Pub, Day's Inn
117 Elm St., Unit 102, Sudbury**

Parking Available





COMMUNITY CLASSIFIEDS

STRUGGLING STUDENT??

Help may be on its way! :) There has been some interest towards a tutoring service out here in WFN. If your child is having difficulty in school and you think he/she might benefit from one on one tutoring, please contact Stefanie Recollet at the Band Office, 705-858-0610 x218 or Diane Wilson at TutorDoctor 705-523-0100.

Why travel off-reserve to get your child the help they need? Who has the time for that?

Financing issues? Your child may be eligible for funding. Don't delay call today.



“We Make House Calls!”

I Paul Recollet would like to say Miigwetch to the Dreamcatcher Charitable Foundation for there support I had a great year with the Nickel City Rebels AA hockey team, I learn lots from team mates and coaching staff it was lots of fun a big MIIGWETCH

**M
i
i
g
w
e
t
c
h**



**M
i
i
g
w
e
t
c
h**

Also miigwetches to Rocky's Restaurant for there sponsorship for Paul Little Bear Recollet AA Hockey team

Maanda Anishinaabemowin ezhi-anishinaabemying.
This language we speak is our way of being Anishinaabe.



Anishinaabemowin Teg

Aabideg wii-bemewidooying Anishinaabemowin wii-niigaanziigdaaming.
We must carry our language forward to be leaders and help one another.

Aabideg aasigaabwitaagewin wii temigak wii-mino-maajishkaaying.
It is necessary to have support if we are to grow in a good way

MEMORANDUM

TO: WAHNAPITAE COMMUNITY MEMBERS
FROM: SHELLEY BAKER, FINANCE MANAGER
DATE: JANUARY 30, 2013
RE: 2013 ANISHINAABEMOWIN-TEG INC.
19TH ANNUAL LANGUAGE CONFERENCE
MARCH 27 - 31, 2013

This Memorandum is to inform Wahnapiatae First Nation Community Members that this year's Annual Language Conference is held in Sault, Michigan on March 27th – 31st, 2013.

Registrations for the Language Conference are submitted online through the Anishnaabmowin Teg website. Registration fees are as follow(s):

Youth, Ages 6 – 17	\$125.00
Student with ID, ALL AGES	\$250.00
Elder, Ages 55+	\$250.00
Adult, Ages 18 – 54	\$300.00
Banquet Ticket	\$ 35.00

If you are interested in attending the Language Conference – please let me know on or before February 22, 2013 by noon.

Registration, Banquet and hotel accommodations will be provided to community members interested in attending. It is your responsibility to book your rooms and pay for your own mileage.

Wahnapiatae First Nation Chief & Council are also requesting that members who attend the Conference submit a letter identifying how the Conference was beneficial to you and what you could bring back to the Community.

Meegwetch



WFN Calendar February 2013

Mkwa Giizis) Bear Moon

SUNDAY	MONDAY	TUESDAY	WEDNESDAY	THURSDAY	FRIDAY	SATURDAY
'NAME GIZHGAT'	'NIAM GIZHGAT'	'NIZH GIZHGAT'	'NSWI GIZHGAT'	'AABTA-YING'	'NAANAN GIZHGAT'	'NGODWAASWI GIZHGAT'
					1 Bezhnik P.A. Day Movies @ hall 12-3:30PM	2 Niizh
3 Nswi	4 Niwin	5 Naanan Mom/Tots Drop in TEA & CRAFTS 10-12pm Gazebo	6Ngodwaaswi ZUMBA 6:30-8:30 pm Capreol	7 Niizhwaaswi Youth Baking/ Valentine CupCakes 4-6 PM Gazebo	8 Nshwaaswi	9 Zhaangswi
10 Mdaaswi	11 Nutrition BINGO 5:00 - 8 PM 	12	13 HOMEWORK CLUB 4-6PM Gazebo	14 Valentine's Day Congregate Dinning 3PM-5PM	15	16 POW WOW Regalia making workshop 10AM -7 PM
17	18 Family Day Sliding Party 1-4PM	19 Food Bank 9:30 AM- 11:30PM	20 ZUMBA 6:30-8:30 pm Capreol	21	22 Family/Youth MOVIE NIGHT 6:30-8:45PM	23
24	25	26	27	28		